



# CHESAPEAKE SCIENCE POINT PUBLIC CHARTER SCHOOL

7321 Parkway Drive South, Hanover, MD 21076

Phone: (443) 757-5280

Fax: (443) 757-5280

Web: <http://www.mycsp.org>

## HIGH SCHOOL

### **CHESAPEAKE SCIENCE POINT MANDATORY UNIFORM POLICY 2018-2019**

**POLICY:** Students are expected to wear CSP uniform at all times and to dress and groom themselves to reflect cleanliness and safety. All students should dress appropriately so as not to disrupt or interfere with the educational program or the orderly operation of the school. The principal or other authorized school official shall determine whether any particular use of the school uniform is in violation of the spirit and/or the intent of this school uniform policy. Students and parents are expected to honor the uniform code in order that valuable school time is not spent examining student attire to determine appropriateness. Students are not permitted to change out of their uniforms during or after school unless participating in an after school activity that requires non-uniform clothing. The uniform policy is in effect from the time students walk into the building to the end of the day when the after school programs are over.

**APPLICABILITY:** The provisions of this policy apply to all students who are enrolled at Chesapeake Science Point (CSP) Public Charter School. It is issued for information and guidance, and requires compliance at all times. This policy is the sole source for dictation on what the school uniform and its components are and how to correctly wear them.

**ENFORCEMENTS:** This policy defines the composition of authorized uniforms. Uniforms and components shall be worn as described in this policy. CSP students must present a proud and professional appearance that will reflect positively on the individual and the school. All students shall comply with this policy and be available to teach others the correct wear of the uniforms. Exemplary appearance should be the norm for all students.

**CHANGES ON THE POLICY:** Chesapeake Science Point has the right to make changes on the uniform policy, anytime needed. Parents and students will be notified if any changes are made in this policy.

### **ORDER INFORMATION:**

Flynn O'Hara

1608 W. Furnace Branch Road  
Glen Burnie, MD 21060  
(410) 684-2816  
website: [flynohara.com/school/md029](http://flynohara.com/school/md029)

## **DAILY UNIFORM**

### **SHOES:**

1. Shoes must be closed-toed dress shoes, athletic shoes, or boots only and predominantly black in color. Birkenstock Clogs without a covered heel in black are also acceptable. We also are allowing high school students the option to wear the solid tan Sperry Boat shoe or a Dirty Buc. Both of these options must be solid tan in color. Students are permitted to wear solid black boots. Pants must not be tucked inside boots or rolled up above boots. Boots should remain under the pants leg.
2. Slippers or thin-soled shoes, sandals, flip-flops, open-toed shoes, high heel shoes, roller shoes, and shoes with wheels are not permitted.
3. For safety purposes, shoes must be worn at all times and shoelaces must be tied properly, all buckles fastened – nothing may dangle or drag from shoes.
4. Shoelaces must be solid black in color if choosing the black shoe option and tan if choosing one of the other options.

### **PANTS OR SHORTS FOR BOYS:**

1. Pants must be khaki, navy blue, or black in color. We are only offering black pants/shorts options to high school students. Material must be 100% cotton or a cotton/polyester blend that is wrinkle resistant. There should be no holes, rips, or tears in the pants. Jeans are not allowed.
2. Pants or shorts must be worn properly at the waist and not sag below the top of the hips. If you choose to wear a belt, the belt must be black in color and must be fastened appropriately. Pants or shorts may not be rolled up or folded up. Shorts must be at least knee length. Pants or shorts must not fit too snugly. Students may not wear the top of their pants or shorts below their buttocks.
3. Athletic shorts are not permitted.
4. Shorts may be worn **ONLY** during summer dates; from the first day of school through Oct. 31<sup>st</sup> and from April 1<sup>st</sup> through the last day of school.

### **BERMUDA SHORTS / CAPRI PANTS / PANTS FOR GIRLS:**

1. Bermuda shorts, capris, and pants must be worn with a solid black belt.
2. Bermuda shorts, capris, and pants must be khaki, navy blue, or black in color. **Denim material is no allowed.** The black option is for **HIGH SCHOOL STUDENTS ONLY**. If you choose to wear a belt, the belt must be black in color and be appropriately fastened. Material must be 100% cotton or a cotton/polyester blend that is wrinkle resistant. There should be no holes, rips, or tears in the pants. **Jeans are not allowed. Leggings and Jeggins are NOT ALLOWED.**
3. **Pants, jeans, pajama bottoms, leggings or other apparel may NOT be worn under the Bermuda shorts, capris, or pants.** Athletic shorts are not permitted. Bermuda shorts, capris, and pants must be worn properly at the waist and not sag below the top of the hips. Bermuda shorts, capris, and pants may not be rolled up or folded up. They must not fit too snugly. Students may not wear the top of their pants, capris, or shorts below their buttocks. Shorts must be knee length.
4. Bermuda shorts, and capris may be worn **ONLY** during summer dates; from the first day of school through Oct. 31<sup>st</sup> and from April 1<sup>st</sup> through the last day of school.

### **SKORTS:**

1. Skorts must be khaki, navy blue, or black in color. Skorts must be **knee length**.
2. Knee high socks or tights are allowed. **ONLY** solid white or solid black are permitted.

### **TOP OPTIONS:**

Embroidered CSP school logo is required for all top options. The logo should be embroidered on the left upper side of the top apparel.

1. The shirt must be jade or black in color. These polo shirts can be either short sleeve or long sleeve. If the student chooses to wear a shirt underneath their polo, the shirt must be solid white or black in color (including the neck rim). If only short sleeved polo shirts are purchased, the student may wear a long sleeve cotton shirt (T-shirt material) underneath. The long sleeved shirt underneath must be 100% white or black with no designs or patterns of any kind and should be clean and stain-free.
2. Sweatshirts are optional and must have the CSP logo. The sweatshirt must be black in color. No sweatshirts with hoods are permitted.
3. The polo fleece is an optional item and is black for high school. The embroidered school logo is required. Parents also have the option of having their child's name embroidered on the opposite side of the logo (this is a great help when students misplace their fleece jackets within the building). The fleece requires that the

student must still be wearing a CSP shirt underneath. The fleece cannot be worn alone.

4. Fleece-lined windbreakers and nylon track jackets are optional items. The windbreaker and track jacket is black and white and must have the embroidered school logo or a CSP sports logo is required.
5. Jackets or windbreakers with a hood may not be worn in the building. Items with a hood must remain in lockers at all times.

### **DRESS SHIRTS AND TIES (BOYS AND GIRLS)**

Oxford dress shirts and ties are the required uniform on certain days throughout the school year. This uniform is required for the Science and Engineering Fair, Picture Day, all field trips, and when we have important visitors. In such case of a visitor, students would be notified. The bottoms and shoes remain the same as normal uniform days. Black belts are always a requirement.

#### 1. **DRESS SHIRT:**

- a. Must be solid white in color. It can be short-sleeve or long-sleeve.
- b. Must have the required embroidered CSP logo.
- c. Must have all buttons (including wrist buttons on long-sleeve shirts) in place and buttoned at all times.
- d. ONLY solid 100% white shirts are permitted to be worn underneath the Oxford shirt and must be short sleeve if the Oxford shirt is short sleeve.
- e. Must be clean, stain-free, and wrinkle-free.
- f. Oxford shirts must remain tucked in at all times.

#### 2. **TIES:**

- a. Girls: Must be solid burgundy criss-cross tie. Must be properly positioned and buttons to shirt must be fastened. We will continue to allow students to wear the maui blue tie if they are wearing the Oxford that matches.
- b. Boys: Must be solid burgundy in color. Boys tie can be clip-on or the standard slip-knot tie. Ties must be properly positioned and shirt buttons must be fastened. We will continue to allow students to wear the maui blue tie if they are wearing the Oxford shirt that matches.

### **ACCESSORIES:**

1. Belts must be solid black. Grommets or excessive ornamentation on the belt are not permitted. Belts are to be worn properly with all pants, capris, and shorts. Belts

must go through all the belt loops and be properly fastened or buckled. The end of the belt must not be allowed to hang down (it must go through the loop if there is excess). The belt must also be tightened enough to prohibit the student's pants, shorts, Bermuda shorts, or capris from sagging below the hips.

2. Socks, stockings, tights, or hose may only be in solid white, black, or opaque for high school. Fishnet or other patterned or bright - colored stockings or hose are not permitted. Stockings, tights, or hose must cover the full length of the student's legs and feet. Leg warmers are not permitted.
3. Permissible Jewelry:
  - Earrings must be no larger than the size of a quarter in diameter and no longer than one inch in length.
  - Necklaces may not be more than 16 inches in length.
  - Jewelry should not be worn in excess (for example having more than 3 bracelets, necklaces, etc.)
  - None of the said items may pose a safety hazard, cause a distraction or represent weapons, contraband, racism, bullying, or harassment of any kind.
4. Purses/book-bags:
  - Purses must be no larger than 5 inches by 7 inches in size.
  - Book-bags must remain in lockers at all times.

### **PHYSICAL EDUCATION UNIFORM FOR HIGH SCHOOL:**

The PE uniform must be worn during the student's assigned physical education class and only during this time. The students will change into their PE uniform before PE class and will change back into their regular school uniform after PE class. The entire gym uniform must be worn as stated below.

1. **GYM SHIRT:** Solid gray in color with CSP logo on the front. ONLY solid white long sleeve shirts are permitted to be worn underneath the PE shirt.
2. **PANTS:** Solid navy blue with the CSP logo. No other pant option is permitted. (Students will be indoors for PE so pants may not be necessary)
3. **SHORTS:** Solid navy blue with the CSP logo. No other shorts option is permitted.
4. **GYM SHOES:** (IF STUDENTS CHOOSE TO WEAR COLORED TENNIS SHOES FOR PE, THEY MAY ONLY WEAR THEM DURING THE PE CLASS)
  - a. Tennis shoes (can be any color)
  - b. Must be fully laced through all eyelets and tied, if applicable
5. **SOCKS:** Must be solid white in color

## **MISCELLANEOUS GUIDELINES:**

1. Clothing should be neat and clean.
2. Clothing may not be worn inside-out or backwards. Undergarments must not be exposed.
3. All shirts worn underneath a required uniform shirt must be solid (100%) white or black and be clean and stain-free.
4. Hair, face, and body paint are inappropriate for school and are not permitted.
5. Cosmetics and/or make-up should be age-appropriate, appropriate for school, and not attract undue attention.
6. Clothing with rips, tears, holes, or frayed edges is considered inappropriate for school and not permitted.
7. Jewelry and accessories should be appropriate for school and not attract undue attention or pose a safety risk.
8. Extreme hairstyles are not permitted (examples: Mohawk cuts, hair coloring other than standard frosting or natural highlighting) and should not attract undue attention.
- 9. Hats, caps, curlers, headscarves, bandanas, durags, hair picks, combs, sweatbands, chains, sunglasses, tennis skirts or skirts/dresses above the knee, gloves, arm/leg warmers, and coats are not permitted to be worn during school hours.**
10. Headwraps for religious or cultural purposes may be permitted.
11. Clothing that is excessively revealing, such as short mini-skirts, short-length shorts, tank-tops, loosely fitting, low-cut blouses or halter tops, mesh shirts, or shirts exposing the midriff are not to be worn to school at any time. Sleeveless shirts are not allowed. (This mainly applies to non-uniform and dress down days at school)
12. All clothing, notably t-shirts and sweatshirts, must be in good taste (no suggestive wording or illustrations or advertisements for items which are illegal for students-i.e., alcohol and tobacco products, etc. This mainly applies to non-uniform and dress down school days.
13. Skirts, shorts, dresses, and skorts worn on dress down days must be knee length or have leggings underneath.
14. All outside coats and jackets or hooded apparel may not be worn inside the school building. These items must be placed in the student's locker upon entering the building and remain there until the end of the school day.
15. Excessive multiple piercings are not allowed while in uniform so as not to attract undue attention or pose a safety risk.
16. The bottom two buttons on the polo shirts must be buttoned at all times.

All uniform tops must have the CSP logo embroidered on the upper left side.

Should a student's uniform not comply with the uniform dress code, they will be considered in violation. Students who violate the uniform code will be allowed to call home for an appropriate change of clothing after obtaining administrator approval.

GIRLS:

SHORTS, CAPRI PANTS, BERMUDA SHORTS (Only permitted from first day of school through Oct. 31<sup>st</sup> and from April 1<sup>st</sup> through the last day of school), PANTS, & SKORTS

ALLOWED:

 <p><b>KHAKI SHORTS</b></p>	 <p><b>NAVY SHORTS</b></p>	 <p><b>BLACK SHORTS</b></p>
 <p><b>KHAKI PANTS</b></p>		 <p><b>BLACK PANTS</b></p>



**ALLOWED:**



**ALL SHOES MUST BE SOLID BLACK OR THE 2 ADDITIONAL TAN OPTIONS SEEN BELOW (EXCEPT ON PHYSICAL EDUCATION DAYS)**

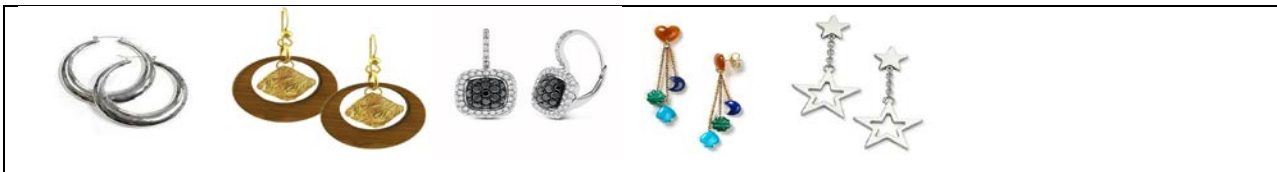
**ALLOWED:**





**ALL EARRINGS CAN BE NO LARGER THAN THE SIZE OF A QUARTER OR 1 INCH IN LENGTH**

**EXAMPLES OF APPROPRIATE SIZE AND/OR LENGTH OF EARRINGS:**



**BOYS:**

**SHORTS (Only permitted from first day of school through Oct. 31<sup>st</sup> and from April 1<sup>st</sup> through the last day of school), & PANTS**

**ALLOWED:**



**ALL SHOES MUST BE MOSTLY BLACK OR TAN EXCEPT ON PHYSICAL EDUCATION DAYS**

**ALLOWED:**



**THE FOLLOWING ARE ITEMS THAT ARE NOT ALLOWED AND IF WORN STUDENTS WILL BE IN VIOLATION OF CSP UNIFORM POLICY:**



**SHOES NOT ALLOWED:**



**ACCESSORIES NOT ALLOWED:**



## **Mandatory School Uniform Policy Disciplinary Procedures 2018-2019**

1. Violations of the uniform policy (dress code) will be documented and signed by the student and result as follows:
  - A. **FIRST VIOLATION:** Verbal warning to student.
  - B. **SECOND VIOLATION:** Student is assigned to lunch detention.
  - C. **THIRD VIOLATION:** Student is assigned to lunch detention and parent is contacted.
  - D. **FOURTH AND SUBSEQUENT VIOLATIONS:** Administration will administer a disciplinary consequence in accordance with AACPS Code of Student Conduct in the following order: 1. Parent Contact 2. Parent will bring appropriate dress code item to school, 3. Student assigned to administrative detention 4. Parent Conference 5. Saturday Detention. Continued and subsequent violations may result in **out of school suspension**. The severity of the infraction and the

student's willingness to cooperate with school officials and adhere to the standards of the dress code will be factored into disciplinary consequence.

2. Violations of this dress code shall be treated as disruptive behavior in violation of the AACPS Code of Student Conduct. However, dress-code violations shall not carry over on the student's disciplinary record to subsequent years. This dress code shall apply to all students at all times when they attend school or any school related or sponsored event.
3. Students who violate the uniform policy multiple times may be banned from having certain clothing options included in this uniform policy. Example: A student who does not follow the policy on the length of skirts multiple times may not be allowed to have skirts anymore until the end of that academic year.